

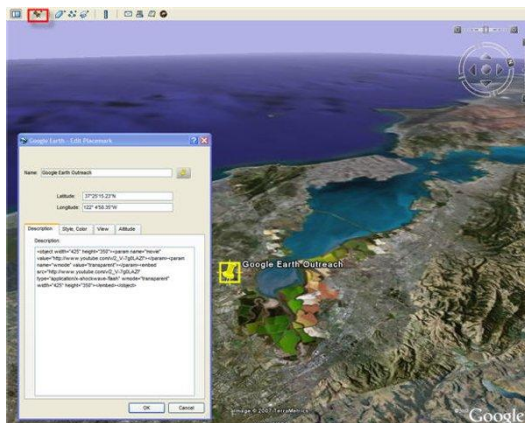
Uploading Video & Audio to Google Earth

***This requires a broadband internet connection.**

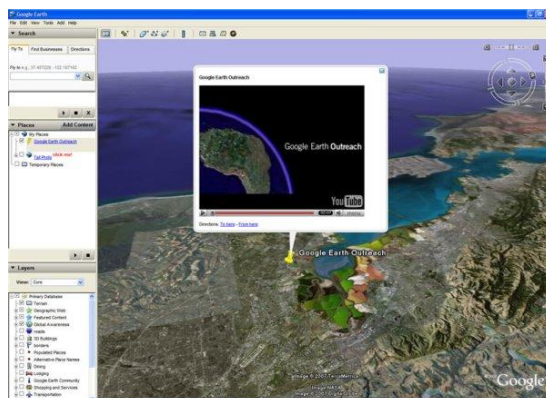
NOTE: Audio & video are NOT automatically geotagged. These instructions assume that you already have a placemark in Google Earth at the point at which you took the recording. It would be a good idea to take a geotagged photo of something right before you record audio/video. That way you will be able to create a placemark, and you will know which audio/video file goes there because it will have the same time on it as the photo.

Video

- 1) Make sure that you have [converted your video](#) down to a reasonable size. 20 or 30 megabytes may be workable, but requires a quality broadband connection.
- 2) Create a YouTube Account and upload your videos.
- 3) View your YouTube videos. Every video on the site has a panel on the right-hand side that features “Embed” code. Select and copy that.
- 4) Open Google Earth and select your placemark.
- 5) In the placemark’s description field, paste the YouTube Embed code from Step 3.



- 6) Click OK. Your video is now embedded. The placemark will now look like this.



Audio

- 1) Use Audacity to save your file as an MP3.
- 2) Login to the FTP ([Use FTP Instructions](#)). Drop the instructions
- 3) Copy the URL: `http://www.isismapping.org/media/YOURFILENAME.MP3`
- 4) Paste the MP3 URL into the bold section of this code. DO NOT delete the quotation mark after the link:

```
<embed type="application/x-shockwave-flash"
src="http://www.google.com/reader/ui/3247397568-audio-
player.swf?audioUrl=MP3_FILE_URL" width="400" height="27"
allowscriptaccess="never" quality="best" bgcolor="#ffffff" wmode="window"
flashvars="playerMode=embedded" />
```

- 5) Copy the code now that your URL is inserted.
- 6) Open Google Earth and select your placemark.
- 7) In the placemark's description field, paste the embed code.
- 8) Click OK. You're all set. An embeddable audio player should now appear at the placemark.