

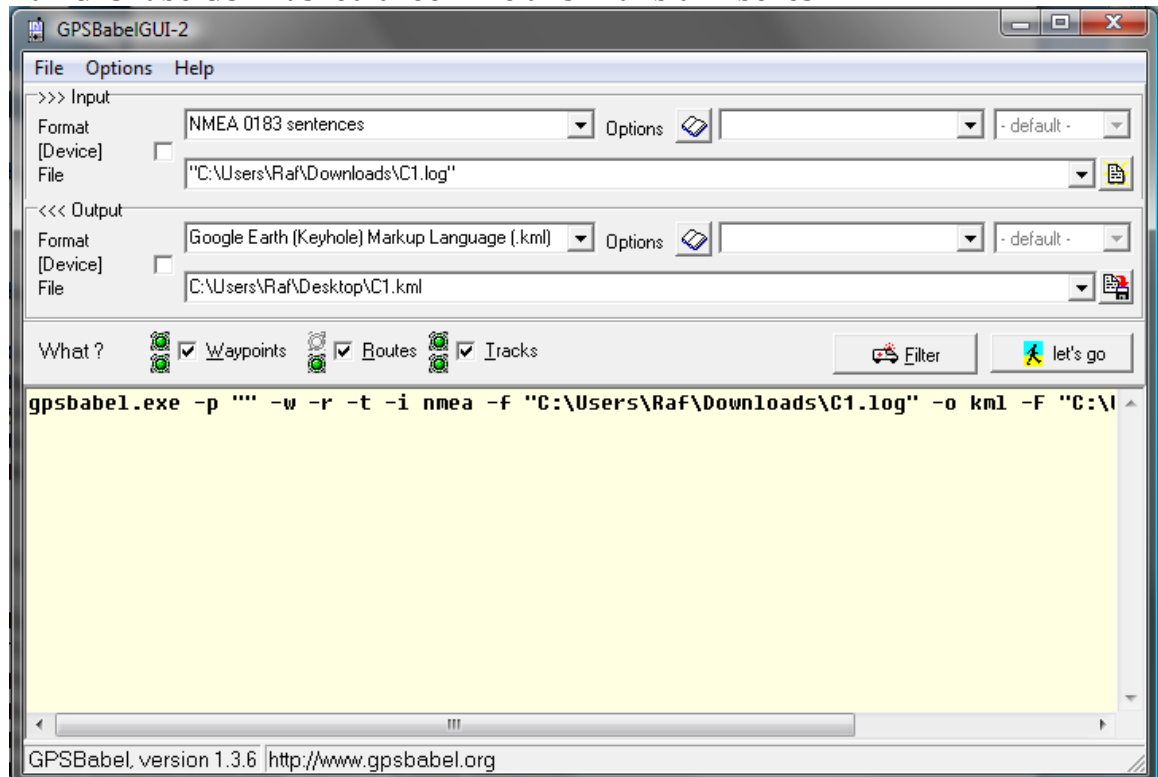
GPSTBabel



GPS Babel is a free GPS conversion software. It can convert any GPS file to any other GPS file.

GPS Babel:

1. Run GPSTBabelGUI. It should look like this with blank boxes:



2. The top box should read "NMEA 0183 sentences"
3. The box underneath it should point to the location of your data log. To select it, click on the button at the end of the box that looks like a piece of paper with a folded corner.
4. The top box in the Output section should read "Google Earth (Keyhole) Markup Language (.kml)"

5. The box underneath it should point to the location you want your new .kml file to be located. To select its location, press the button at the end of the box and give your new file a name.
6. Press "let's go".
7. [Follow instructions for Google Earth.](#)